

INDIANA COUNTY WOODTURNERS ASSOCIATION

ICWA meets the 2nd Tuesday of the month at Sprawls Hall, IUP Campus. The meeting starts at 7:00 pm, refreshments available between 6 and 6:30 pm.



2010-2011

VOLUME 2 ISSUE 5

APRIL 3, 2011

SPECIAL POINTS OF INTEREST:

- Just a note
- Upcoming events
- Dues reminder

Web sites of interest:

- woodturner.org(AAW)
- arizonasilhouette.com
- bereahardwoods.com
- chefspecialties.com
- klingspor.com
- packardwoodworks.com
- Pswood.com
- sloanswoodshop.com
- thewoodbox.com
- traditionalwoodworker.com
- turnersanonymous.org
- westpennhardwoods.com
- woodturnerscatalog.com
- woodturningdesign.com
- woodturningz.com

If you have any suggestions for events, turning demonstrations, or even additions to the newsletter, please submit them to me at a meeting or email me at smallturnings@gmail.com.

Mark Sfirri, New Hope, PA

Mark Sfirri was the presenter for the March meeting. Mark teaches furniture making and turning at Bucks County Community College. Most of his truing incorporates carving.

Mark conducted a slideshow and a talk about his work and his muse prior to the turning demonstration. The talk and demonstration were open to the public. A number of non ICWA members were present, including a contingent of turners from the Pittsburgh club, Turners Anonymous.

Mark turns his pieces on multiple centers and axes. Here he is turning a piece which closely resembles sculpture, which is at the heart of his turning.

Using three centers, the wood is turned away such that a figure begins to emerge. Mark stresses that it is necessary to keep the edges of the figure sharp while turning to insure the over all esthetic composure of the piece.

The model for the piece is on top of the blank being turned. Depending on what needs to be taken away, deter-



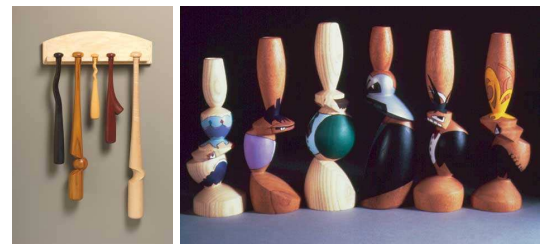
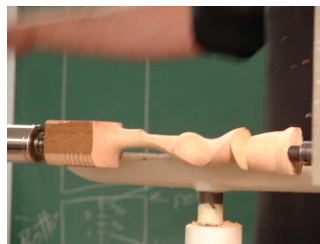
mines which center is used. As always, a light touch is desired. I also noted that Mark likes to keep the speed up pretty high.



The blank has been turned as much as is needed. The ends will be trimmed up and the "head" and shoulders will be hand carved to complete the figure.



Completed figure all the is needed is to trim up the bottom.



Linda VanGehuchten will demonstrate turning thin walled bowls at the meeting this Tuesday. Linda is a past member of ICWA and is currently a member of Turners Anonymous and the president of Butler County Woodturners.